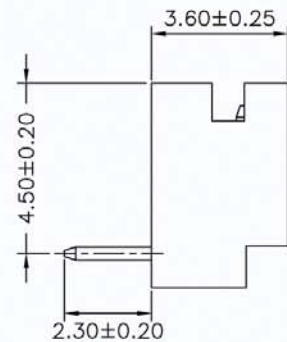
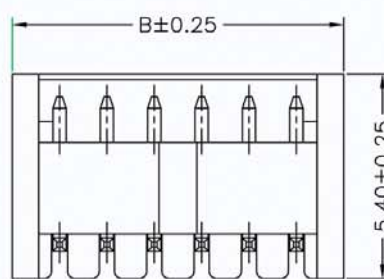
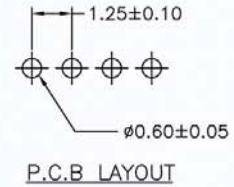
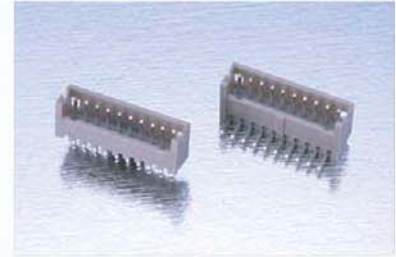
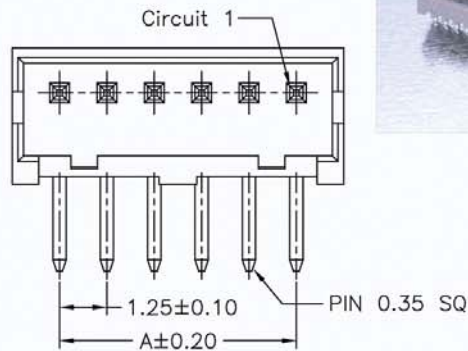


# 1.25mm WAFER RIGHT ANGLE / STRAIGHT TYPE

## SPECIFICATIONS

Current Rating: 1A AC,DC  
 Voltage Rating: 100V AC,DC  
 Temperature Range:  $-25^{\circ}\text{C} \sim +85^{\circ}\text{C}$   
 Contact Resistance:  $20\text{m}\Omega$  Max.  
 Insulation Resistance:  $100\text{M}\Omega$  Min.  
 Withstanding Voltage: 500V AC/minute  
 Pin Material: Brass/Tin-plated  
 Material: Nylon 66,UL94V-0  
 Pantone Color: 7529C~7530C

PART NO.	Dimensions	
	A	B
1252R-02TW-L	1.25	3.75
1252R-03TW-L	2.50	5.00
1252R-04TW-L	3.75	6.25
1252R-05TW-L	5.00	7.50
1252R-06TW-L	6.25	8.75
1252R-07TW-L	7.50	10.00
1252R-08TW-L	8.75	11.25
1252R-09TW-L	10.00	12.50
1252R-10TW-L	11.25	13.75
1252R-11TW-L	12.50	15.00
1252R-12TW-L	13.75	16.25
1252R-13TW-L	15.00	17.50
1252R-14TW-L	16.25	18.75
1252R-15TW-L	17.50	20.00

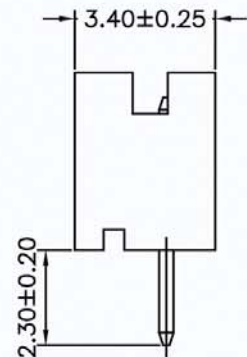
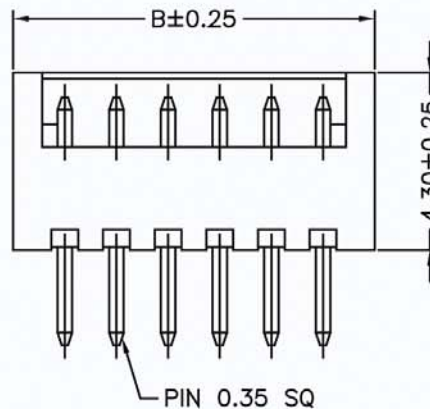
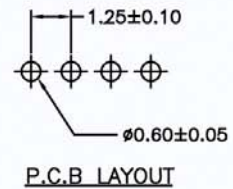
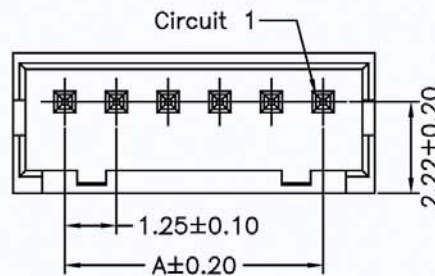


## Part No.:1252R-XXTW-L

## SPECIFICATIONS

Current Rating: 1A AC,DC  
 Voltage Rating: 100V AC,DC  
 Temperature Range:  $-25^{\circ}\text{C} \sim +85^{\circ}\text{C}$   
 Contact Resistance:  $20\text{m}\Omega$  Max.  
 Insulation Resistance:  $100\text{M}\Omega$  Min.  
 Withstanding Voltage: 500V AC/minute  
 Pin Material: Brass/Tin-plated  
 Material: Nylon 66,UL94V-0  
 Pantone Color: 7529C~7530C

PART NO.	Dimensions	
	A	B
1252S-02TW-L	1.25	3.75
1252S-03TW-L	2.50	5.00
1252S-04TW-L	3.75	6.25
1252S-05TW-L	5.00	7.50
1252S-06TW-L	6.25	8.75
1252S-07TW-L	7.50	10.00
1252S-08TW-L	8.75	11.25
1252S-09TW-L	10.00	12.50
1252S-10TW-L	11.25	13.75
1252S-11TW-L	12.50	15.00
1252S-12TW-L	13.75	16.25
1252S-13TW-L	15.00	17.50
1252S-14TW-L	16.25	18.75
1252S-15TW-L	17.50	20.00



## Part No.:1252S-XXTW-L