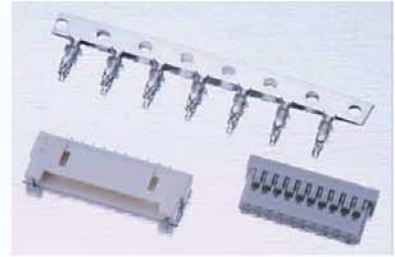
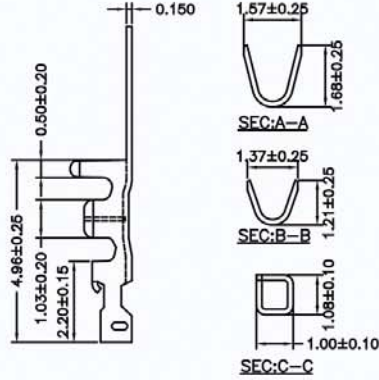
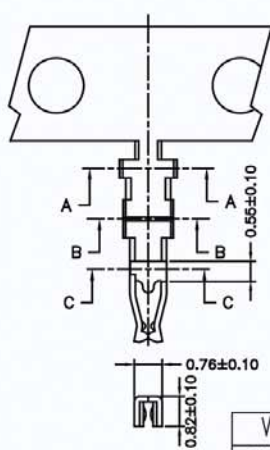


# 1.25mm TERMINAL / HOUSING / WAFER SMT R/A TYPE



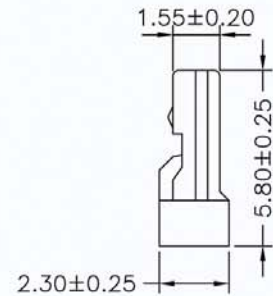
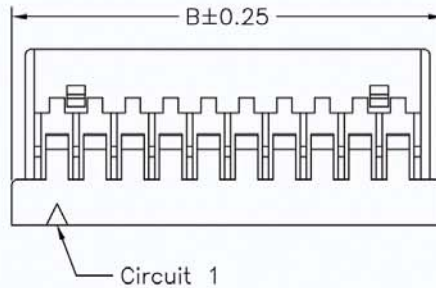
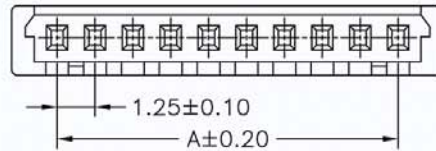
**Part No.:1253-T-L**

Wire Range	Insulation O.D.	Material	Finish	Qty/reel
AWG#26-#32	1.00mm(max)	Phosphor Bronze	Tin-plated	10,000pcs

## SPECIFICATIONS

Current Rating: 1A AC,DC  
 Voltage Rating: 100V AC,DC  
 Temperature Range: -25°C ~ +85°C  
 Contact Resistance: 20mΩ Max.  
 Insulation Resistance: 100MΩ Min.  
 Withstanding Voltage: 500V AC/minute  
 Material: Nylon 66,UL94V-0  
 Pantone color: 7529C

PART NO.	Dimensions	
	A	B
1253H-02W-L	1.25	4.35
1253H-03W-L	2.50	5.60
1253H-04W-L	3.75	6.85
1253H-05W-L	5.00	8.10
1253H-06W-L	6.25	9.35
1253H-07W-L	7.50	10.60
1253H-08W-L	8.75	11.85
1253H-09W-L	10.00	13.10
1253H-10W-L	11.25	14.35
1253H-11W-L	12.50	15.60
1253H-12W-L	13.75	16.85
1253H-13W-L	15.00	18.10
1253H-14W-L	16.25	19.35
1253H-15W-L	17.50	20.60
1253H-20W-L	23.75	26.85
1253H-25W-L	30.00	33.10
1253H-30W-L	36.25	39.35

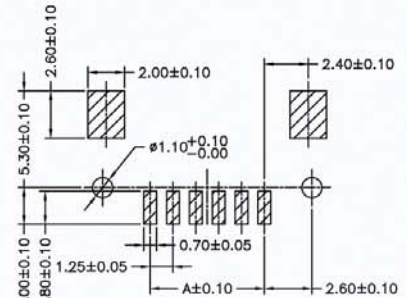
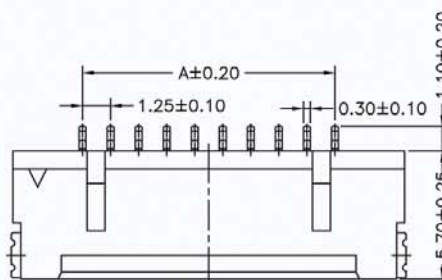


**Part No.:1253H-XXW-L**

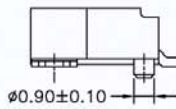
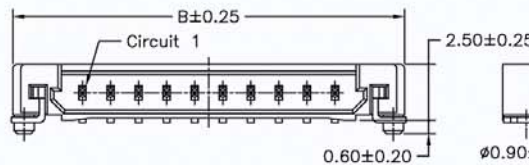
## SPECIFICATIONS

Current Rating: 1A AC,DC  
 Voltage Rating: 100V AC,DC  
 Temperature Range: -25°C ~ +85°C  
 Contact Resistance: 20mΩ Max.  
 Insulation Resistance: 100MΩ Min.  
 Withstanding Voltage: 500V AC/minute  
 Pin Material: Brass/Tin-plated  
 Solder Tabs: Brass/Tin-plated  
 Material: Nylon 6T,UL94V-0  
 Color: Natural(Beige)

PART NO.	Dimensions	
	A	B
1253MR-02W-U	1.25	7.45
1253MR-03W-U	2.50	8.70
1253MR-04W-U	3.75	9.95
1253MR-05W-U	5.00	11.20
1253MR-06W-U	6.25	12.45
1253MR-07W-U	7.50	13.70
1253MR-08W-U	8.75	14.95
1253MR-09W-U	10.00	16.20
1253MR-10W-U	11.25	17.45
1253MR-11W-U	12.50	18.70
1253MR-12W-U	13.75	19.95
1253MR-13W-U	15.00	21.20
1253MR-14W-U	16.25	22.45
1253MR-15W-U	17.50	23.70
1253MR-20W-U	23.75	29.95
1253MR-25W-U	30.00	36.20
1253MR-30W-U	36.25	42.45



**P.C.B. LAYOUT**



**Part No.:1253MR-XXTW-U**